

SERIES 318

SNAP-TOGETHER



TWO LAMP T5 OPTION



Application

- Undercabinet; T8 Preheat, T8 Rapid Start
- Companion to Series 312, 315, 322 and 327

Finishes Available

- White
- Walnut
- Oak

Features

- Snap-Together body and ballast cover
- No fasteners

Diffuser

- Ribbed white acrylic

Optional Features

Custom modifications in the physical specification and color are available for this fixture.

Lamping Options

T12	T8	T5	CFL
-	(1) 15W	* (1) 8W	-
-	(1) 17W	* (1) 13W	-
-	* (2) 15W (T)	* (2) 8W (T)	-
-	* (2) 17W (T)	* 8W+13W (T)	-
-	(1) 25 W	* (2) 13W (T)	-
-	(1) 32W		-
-			-
-			-

* available in above sizes as special order

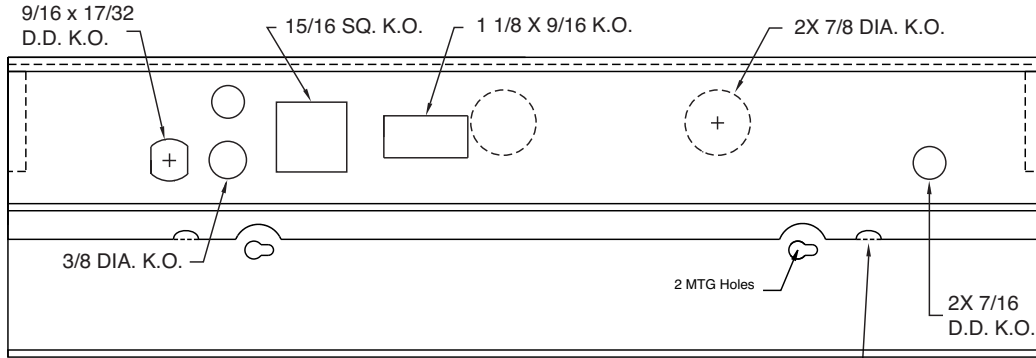
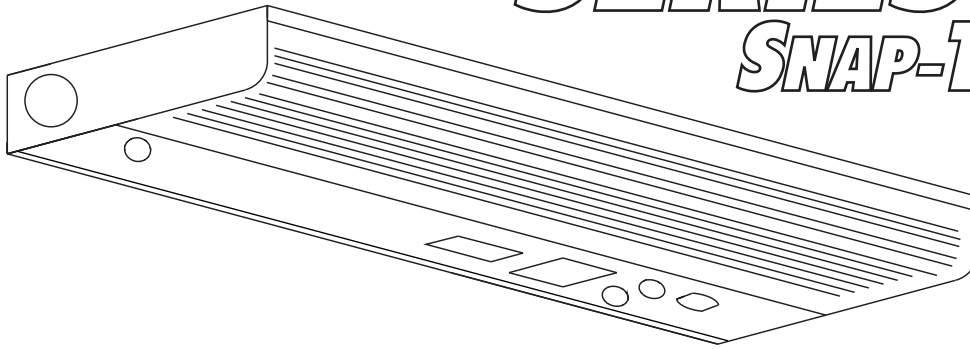
(T) Tandem

Packaging	8W	13W	15W	17W	(2)8W	8+13W
Bodies	36	36	36	36	36	16
Diffusers	200	100	100	100	100	100
	(2)13W	(2)15W	(2)17W	25W	32W	
Bodies	16	16	16	16	16	
Diffusers	100	100	100	100	100	

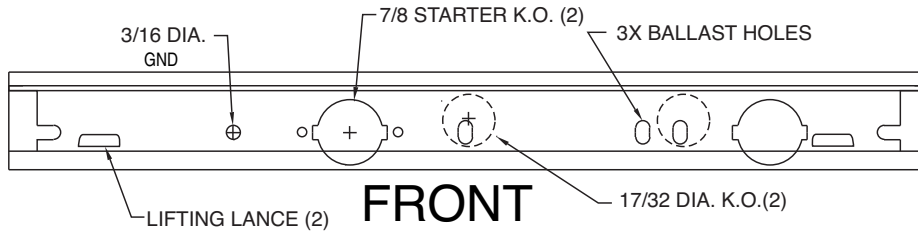


SERIES 318

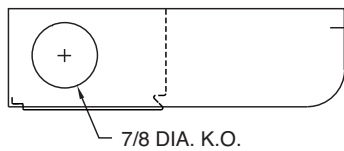
SNAP-TOGETHER



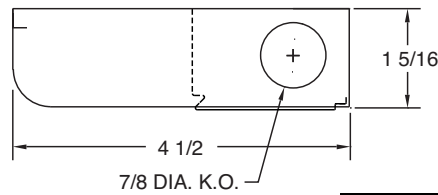
TOP SNAP-TOGETHER LANCE (2)
WITHOUT DIFFUSER



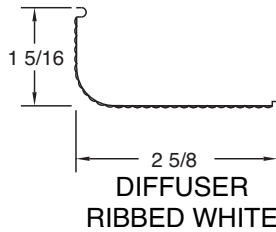
FRONT



LEFT END



RIGHT END



T5	
SIZE	LENGTH
(1) 8W*	12-1/4
(1) 13W*	21-1/4
(2) 8W (T)*	24-7/16
8W+13W(T)*	33-7/16
(2) 13W (T)*	42-7/16

T8	
SIZE	LENGTH
(1) 15W	18-1/8
(1) 17W	24-1/8
(2) 15W (T)*	36-1/8
(2) 17W (T)*	48-1/8
(1) 25W	36-1/8
(1) 32W	48-1/8

* available as special order (T) Tandem

* available as special order (T) Tandem

REV 9-24-09

