

SERIES 690



Application

- Cove Lighting
- Store Fixture
- Signage
- Display
- Vending Machines
- Slot Lighting

Finishes Available

- White pre-painted steel
- White pre-painted aluminum (WPA)

Diffuser

- None

Optional Features

- Symmetrical and asymmetrical reflectors in enhanced aluminum or standard pre-painted white.
- Mounting tabs
- Starter under lamp or on side
- Side lamps for T-5 & T-8

Custom modifications in the physical specification and color are available for this fixture.

Features

- Body houses all wiring and components for ease of installation
- Cover/lid fastens with two screws, no components
- Optional reflectors can be used with or without cover/lid
- Body has end holes for joining together with screws
- Push-up Sockets

Lamping Options

T8	T5	T5 HO
(1) 17W	(2) 14W	(2) 24W
(1) 25W	(2) 21W	(2) 39W
(1) 32W	(2) 28W	(2) 54W
(2) 25W (T)*	(4) 21W (T)*	(4) 39W (T)*
(2) 32W (T)*	(4) 28W (T)*	(4) 54W (T)*

* available as special order

(T) Tandem

T-5 single lamp available as special order.

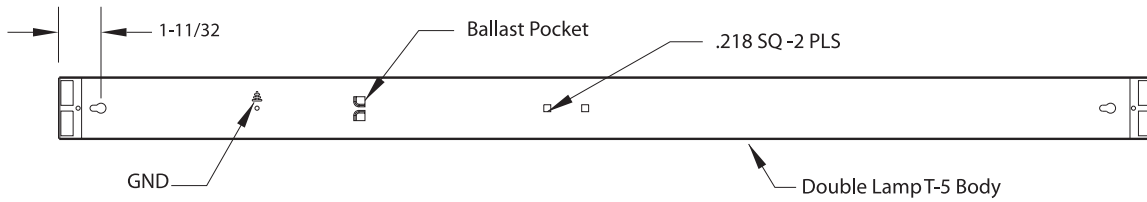
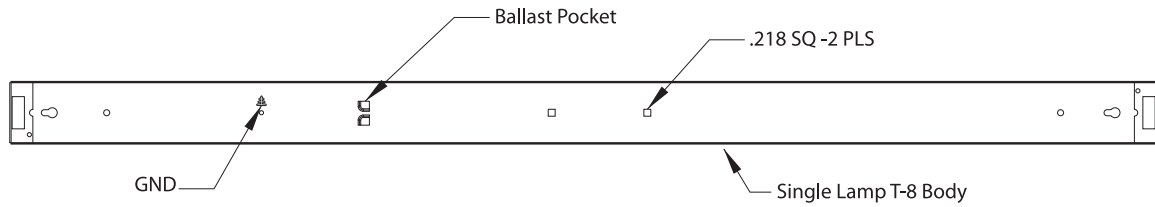
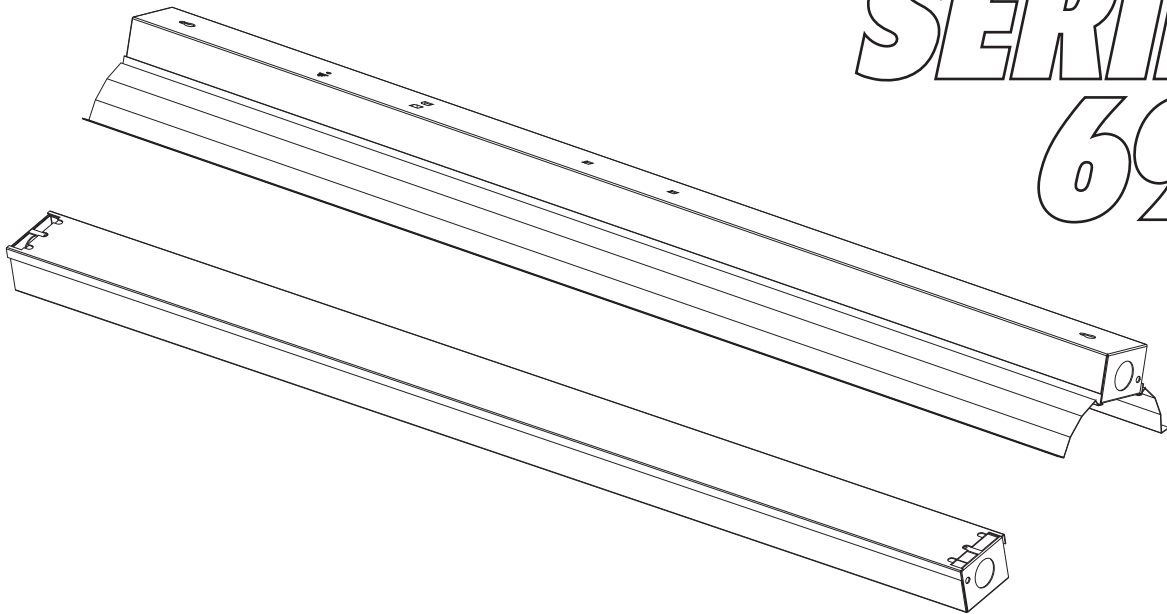
T-12 available in equivalent T-8 sizes.

Other lamp configurations possible. Check with factory.

Packaging	14W	15W	17W	21W	24W
Bodies	12	12	12	12	12
	25W	28W	32W	39W	54W
Bodies	12	12	12	12	12



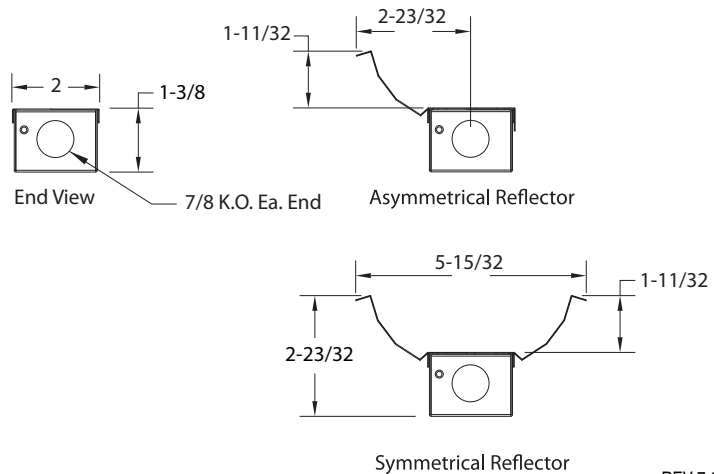
SERIES 690



T5 2 Lamp
T5 1 Lamp
T8 1 Lamp

T5		T8	
SIZE	LENGTH	SIZE	LENGTH
(2) 14W	22-5/8	(1) 17W	24-3/16
(2) 21W	34-15/32	(1) 25W	36-3/16
(2) 28W	46-1/4	(1) 32W	48-3/16
(2) 54W	46-1/4	(2) 25W(T)	71-15/16
(4) 21W(T)	68-1/8	(2) 32W(T)	95-15/16
(4) 28W(T)	92-1/8		

* single lamp T-5 available as special order
T-12 available in equivalent T-8 sizes.



REV 7-29-09

